

S.E. 1/4
SECTION 32, T.6N., R.2W., S.L.B.&M.

84

TAXING UNIT: 53

TAYLOR DISTRICT

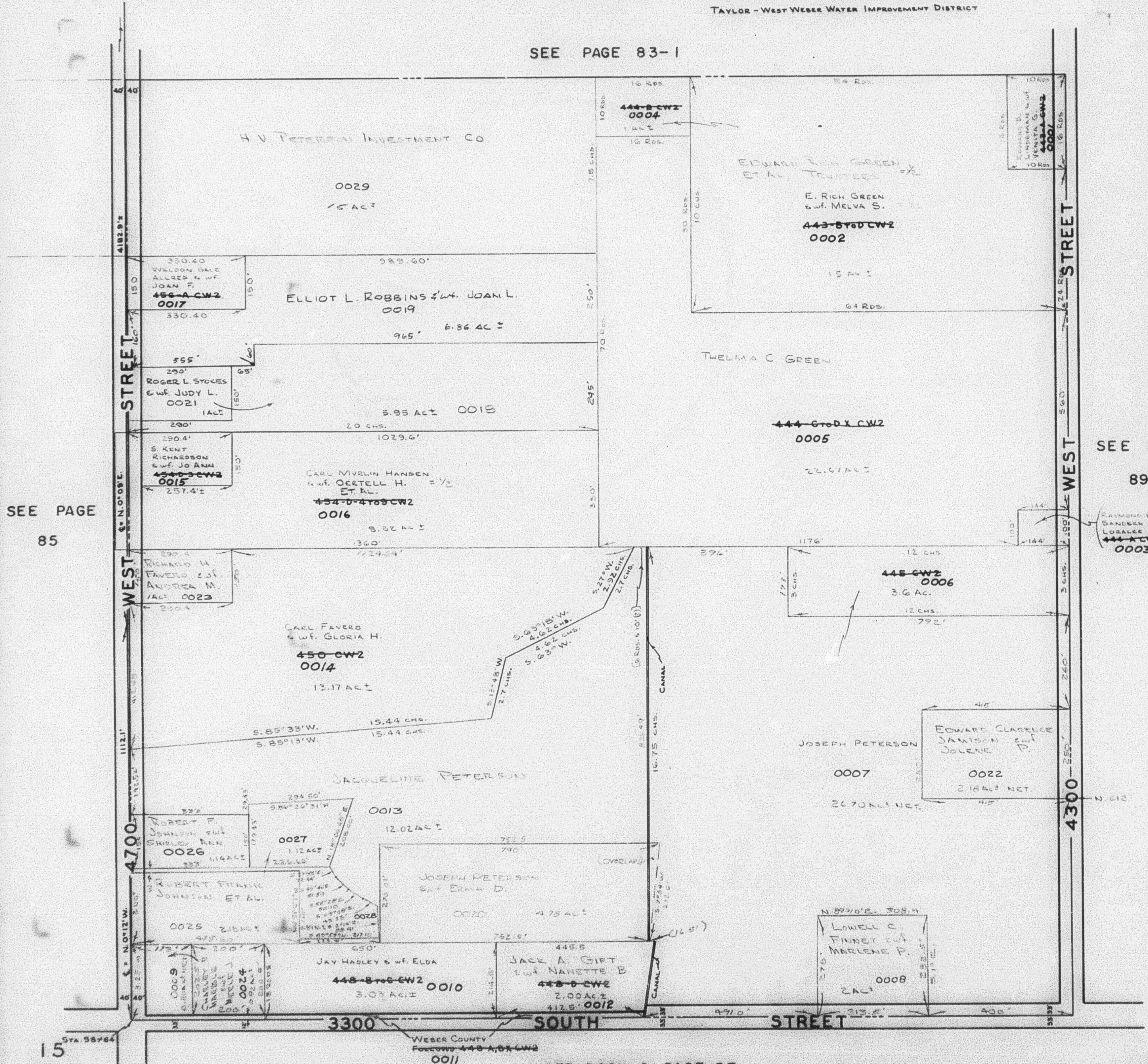
PREFIX: 15-084

SCALE 1"=200'

WEST WEBER-TAYLOR CEMETERY MAINTENANCE DISTRICT

TAYLOR-WEST WEBER WATER IMPROVEMENT DISTRICT

SEE PAGE 83-1



SEE PAGE 85

SEE PAGE 89

89

(RAYMOND EARLE SANDERS & WIFE LORELEE GREEN)
444-CWZ
0003

15

WEBER COUNTY
Follows 448-A, 01-CWZ
0011

SEE BOOK 8, PAGE 37

D.R.P. 5-67